

\$2,498,000 - 116 Windermere Crescent, Edmonton

MLS® #E4411610

\$2,498,000

4 Bedroom, 5.00 Bathroom, 4,266 sqft

Single Family on 0.00 Acres

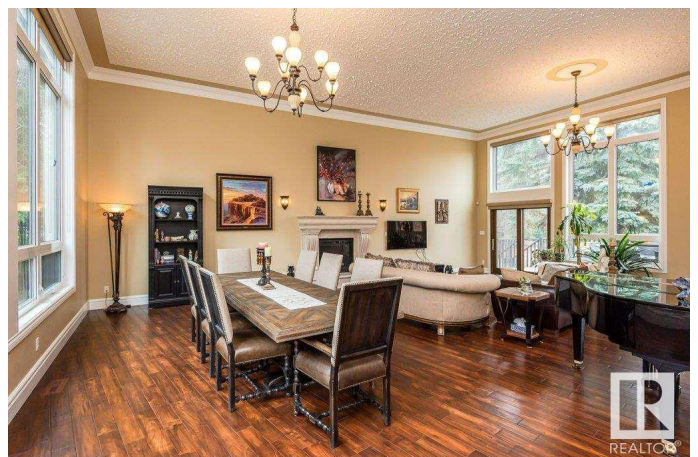
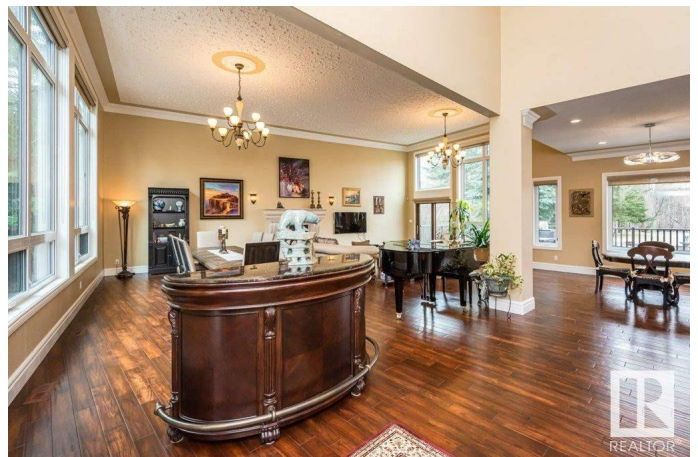
Windermere, Edmonton, AB

An estate to defy all estates in Windermere. Nestled on 1.247 acres surrounded by trees and the ravine. This extraordinary new executive 2 storey 4265 sq ft plus 2011sq ft finished basement has 4 generous bedrooms 5 baths, bonus room & laundry room. Very private, serene setting, it is a dream to live in a park like setting backing onto the ravine, Golf Course and River, a truly special location! Exceptional quality finishes. The main floor is a stunning great room design with high open ceilings and stunning walls of glazing it makes the views truly breathtaking. The Chef inspired gourmet kitchen with huge granite island overlooks the dining area and great room. Fully equipped with walk-in pantry. Main floor office, 3pce bath with dog wash. Numerous upgraded features main floor office, media rec room, bedroom, bath, upgraded mechanical system, 2 a/c. Beautifully landscaped circular driveway. An estate for every season. The ideal estate with room to grow. Ample room for pool, garden and room to play.

Built in 2016

Essential Information

MLS® #	E4411610
Price	\$2,498,000
Bedrooms	4



Bathrooms	5.00
Full Baths	5
Square Footage	4,266
Acres	0.00
Year Built	2016
Type	Single Family
Sub-Type	Detached Single Family
Style	2 Storey
Status	Active

Community Information

Address	116 Windermere Crescent
Area	Edmonton
Subdivision	Windermere
City	Edmonton
County	ALBERTA
Province	AB
Postal Code	T6W 0S3

Amenities

Amenities	Air Conditioner, Deck, Detectors Smoke, Parking-Extra
Parking Spaces	10
Parking	Front/Rear Drive Access, Insulated, Over Sized, Triple Garage Attached

Interior

Interior Features	ensuite bathroom
Appliances	Air Conditioning-Central, Dishwasher-Built-In, Dryer, Garage Control, Garage Opener, Hood Fan, Refrigerator, Stove-Countertop Gas, Washer, Window Coverings
Heating	Forced Air-2, Natural Gas
Fireplace	Yes
Fireplaces	Mantel
Stories	3
Has Basement	Yes
Basement	Full, Finished

Exterior

Exterior	Wood, Stone, Stucco
Exterior Features	Backs Onto Park/Trees, Fruit Trees/Shrubs, Golf Nearby, Landscaped,

Private Setting, Ravine View, Shopping Nearby, Treed Lot

Roof	See Remarks
Construction	Wood, Stone, Stucco
Foundation	Concrete Perimeter

Additional Information

Date Listed	October 25th, 2024
Days on Market	174
Zoning	Zone 56

DATA IS DEEMED RELIABLE BUT IS NOT GUARANTEED ACCURATE BY THE REALTORS® ASSOCIATION OF EDMONTON. COPYRIGHT 2025 BY THE REALTORS® ASSOCIATION OF EDMONTON. ALL RIGHTS RESERVED.Trademarks are owned or controlled by the Canadian Real Estate Association (CREA) and identify real estate professionals who are members of CREA (REALTOR®, REALTORS®) and/or the quality of services they provide (MLS®, Multiple Listing Service®)

Listing information last updated on April 17th, 2025 at 9:17pm MDT