

\$169,900 - 1 4616 47 Street, Leduc

MLS® #E4417025

\$169,900

2 Bedroom, 1.00 Bathroom, 901 sqft

Condo / Townhouse on 0.00 Acres

Alexandra Park, Leduc, AB

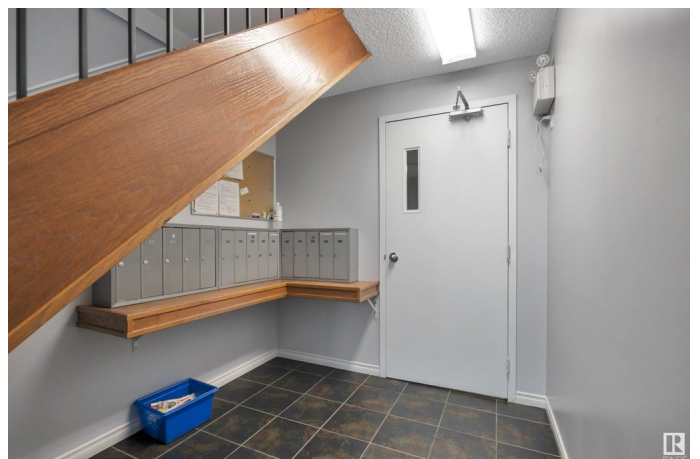
Welcome to this PERFECTLY, FULLY RENOVATED, 2 bedroom condo in Leduc. Situated on a quiet street and close to all amenities, sits a GEM! Upon entering the sun soaked, FRESHLY PAINTED ground floor unit, you're greeted w/LVP flooring, to your left is the kitchen with all NEW quartz counters, upgraded faucet/sink, Stainless Steel appliances including hood fan, D/W built-in, microwave, and stove. Cabinetry is NEW w/soft close doors with gold accents throughout. The backsplash and fixtures are LUXURIOUS, no expense spared including wide modern baseboard. Adjacent to kitchen is the nook area for dining opening to large living room. The full bathroom has quartz countertop and tile backsplash and wait till you see the light up vanity! There's 2 SPACIOUS bedrooms. Stacked washer and dryer complete the property. The terrace is NE facing, perfect for that morning coffee to watch the sun come up! Located close to schools, shopping, arenas, theatre, walking trails, close to the HWY, outlet mall, airport and more!

Built in 1977

Essential Information

MLS® # E4417025

Price \$169,900



Bedrooms	2
Bathrooms	1.00
Full Baths	1
Square Footage	901
Acres	0.00
Year Built	1977
Type	Condo / Townhouse
Sub-Type	Lowrise Apartment
Style	Single Level Apartment
Status	Active

Community Information

Address	1 4616 47 Street
Area	Leduc
Subdivision	Alexandra Park
City	Leduc
County	ALBERTA
Province	AB
Postal Code	T6L 6A3

Amenities

Amenities	No Animal Home, No Smoking Home
Parking	Stall

Interior

Appliances	Dishwasher-Built-In, Dryer, Hood Fan, Refrigerator, Stove-Electric, Washer, Window Coverings
Heating	Baseboard, Natural Gas
# of Stories	3
Stories	1
Has Basement	Yes
Basement	None, No Basement

Exterior

Exterior	Wood, Stone, Vinyl
Exterior Features	Airport Nearby, Back Lane, Fenced, Flat Site, Golf Nearby, Playground Nearby, Public Transportation, Schools, Shopping Nearby
Roof	Asphalt Shingles
Construction	Wood, Stone, Vinyl

Foundation Concrete Perimeter

Additional Information

Date Listed January 3rd, 2025
Days on Market 105
Zoning Zone 81
Condo Fee \$609

DATA IS DEEMED RELIABLE BUT IS NOT GUARANTEED ACCURATE BY THE REALTORS® ASSOCIATION OF EDMONTON. COPYRIGHT 2025 BY THE REALTORS® ASSOCIATION OF EDMONTON. ALL RIGHTS RESERVED.Trademarks are owned or controlled by the Canadian Real Estate Association (CREA) and identify real estate professionals who are members of CREA (REALTOR®, REALTORS®) and/or the quality of services they provide (MLS®, Multiple Listing Service®)
Listing information last updated on April 17th, 2025 at 10:17pm MDT