

# \$669,707 - 16 Edison Drive, St. Albert

MLS® #E4423535

**\$669,707**

3 Bedroom, 2.50 Bathroom, 2,264 sqft  
Single Family on 0.00 Acres

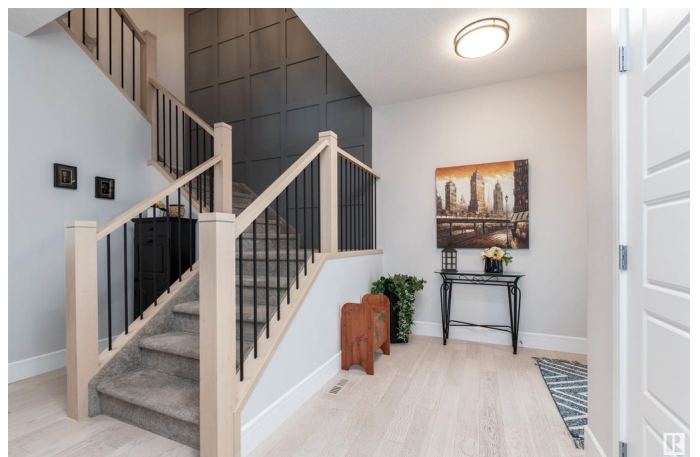
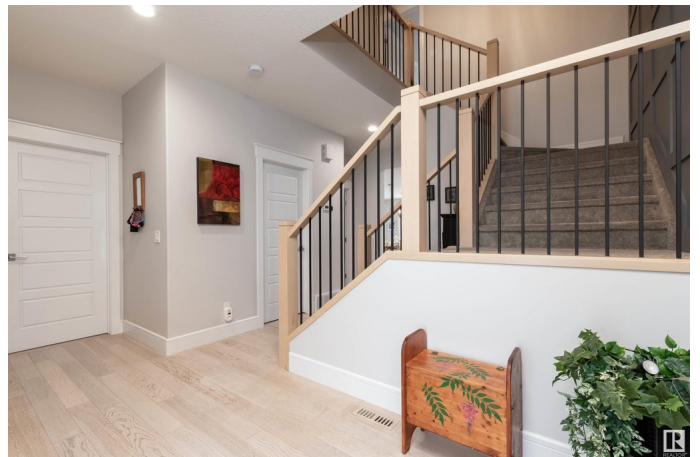
Erin Ridge North, St. Albert, AB

ST. ALBERT BEAUTY! You'll fall in love with this one from the moment you enter! Featuring an amazing open concept with 2264 square feet and superb quality finishings throughout. Feast your eyes on the GORGEOUS CHEF'S KITCHEN with Quartz counter tops, high end appliances, pantry and large dining area. Generous living room with attractive gas fireplace, main floor den/flex room, powder room, and a mud room. **OVERSIZED & HEATED** double attached garage. Upstairs are 3 large bedrooms, convenient laundry room with sink, large Bonus Room and a 4 piece bathroom. The Primary Bedroom offers a walk-in closet and a GORGEOUS 5 piece ensuite! Shower, dual sinks, and soaker tub. Lovely and beautifully landscaped front and backyard with crushed rock in front and artificial turf in back plus deck & patio. Central A/C too! Fabulous location close to parks and great amenities. Located in one of St. Albert's most desirable communities. Shows immaculate! See it and you will love it!! Visit REALTOR® website for more information.

Built in 2018

## Essential Information

|        |           |
|--------|-----------|
| MLS® # | E4423535  |
| Price  | \$669,707 |



|                |                        |
|----------------|------------------------|
| Bedrooms       | 3                      |
| Bathrooms      | 2.50                   |
| Full Baths     | 2                      |
| Half Baths     | 1                      |
| Square Footage | 2,264                  |
| Acres          | 0.00                   |
| Year Built     | 2018                   |
| Type           | Single Family          |
| Sub-Type       | Detached Single Family |
| Style          | 2 Storey               |
| Status         | Active                 |

### **Community Information**

|             |                  |
|-------------|------------------|
| Address     | 16 Edison Drive  |
| Area        | St. Albert       |
| Subdivision | Erin Ridge North |
| City        | St. Albert       |
| County      | ALBERTA          |
| Province    | AB               |
| Postal Code | T8N 7W1          |

### **Amenities**

|           |                        |
|-----------|------------------------|
| Amenities | Air Conditioner, Patio |
| Parking   | Double Garage Attached |

### **Interior**

|                   |   |
|-------------------|---|
| Interior Features | ensuite bathroom  |
| Appliances        | Air Conditioning-Central, Dishwasher-Built-In, Dryer, Garage Control, Garage Opener, Hood Fan, Oven-Microwave, Refrigerator, Stove-Gas, Washer, Window Coverings, Garage Heater |
| Heating           | Forced Air-1, Natural Gas   |
| Fireplace         | Yes   |
| Fireplaces        | Tile Surround   |
| Stories           | 2   |
| Has Basement      | Yes   |
| Basement          | Full, Unfinished  |

### **Exterior**

|          |                    |
|----------|--------------------|
| Exterior | Wood, Stone, Vinyl |
|----------|--------------------|

|                   |  |
|-------------------|--|
| Exterior Features | Fenced, Landscaped, Park/Reserve, Public Transportation, Shopping Nearby |
| Roof              | Asphalt Shingles   |
| Construction      | Wood, Stone, Vinyl   |
| Foundation        | Concrete Perimeter   |

### **Additional Information**

|                |                 |
|----------------|-----------------|
| Date Listed    | March 1st, 2025 |
| Days on Market | 35              |
| Zoning         | Zone 24         |

DATA IS DEEMED RELIABLE BUT IS NOT GUARANTEED ACCURATE BY THE REALTORS® ASSOCIATION OF EDMONTON. COPYRIGHT 2025 BY THE REALTORS® ASSOCIATION OF EDMONTON. ALL RIGHTS RESERVED. Trademarks are owned or controlled by the Canadian Real Estate Association (CREA) and identify real estate professionals who are members of CREA (REALTOR®, REALTORS®) and/or the quality of services they provide (MLS®, Multiple Listing Service®)

Listing information last updated on April 5th, 2025 at 3:47pm MDT