

\$349,900 - 11505 84 Street, Edmonton

MLS® #E4427423

\$349,900

1 Bedroom, 1.00 Bathroom, 743 sqft

Single Family on 0.00 Acres

Parkdale (Edmonton), Edmonton, AB

Location, location & this is the LOCATION!
Heart of the city of Edmonton!! 9-minute walk
to Stadium Station. This is the land! LOT
size: 545.34 m2; 14.9m X 36.6m (49 feet X
120 feet). It is 50% wider. Other features: **
Den can be easily converted into an additional
bedroom; ** Covered porch; ** Work/exercise
space at basement; ** Last but not the least, it
is a surprisingly clean and well-maintained.
Home is what you make it!

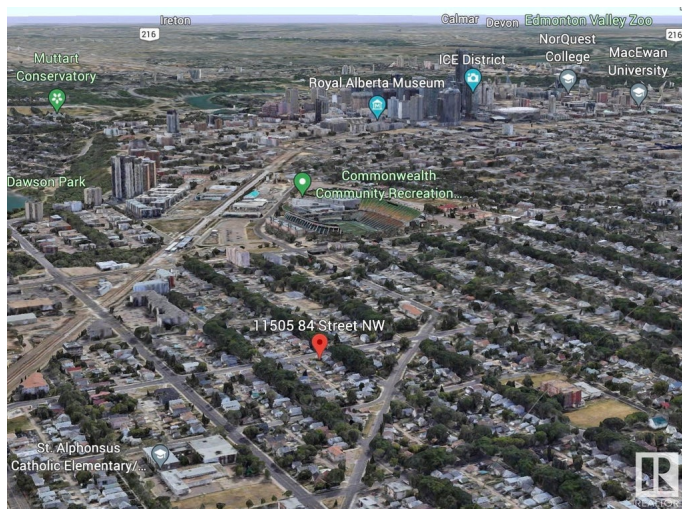
Built in 1928

Essential Information

MLS® #	E4427423
Price	\$349,900
Bedrooms	1
Bathrooms	1.00
Full Baths	1
Square Footage	743
Acres	0.00
Year Built	1928
Type	Single Family
Sub-Type	Detached Single Family
Style	Bungalow
Status	Active

Community Information

Address 11505 84 Street



Area	Edmonton
Subdivision	Parkdale (Edmonton)
City	Edmonton
County	ALBERTA
Province	AB
Postal Code	T5B 3B6

Amenities

Amenities	See Remarks
Parking	Double Garage Detached

Interior

Appliances	Dishwasher-Built-In, Dryer, Refrigerator, Stove-Electric, Washer, Window Coverings, See Remarks
Heating	Forced Air-1, Natural Gas
Stories	1
Has Basement	Yes
Basement	Full, Unfinished

Exterior

Exterior	Wood, Stucco, Vinyl
Exterior Features	See Remarks
Roof	Asphalt Shingles
Construction	Wood, Stucco, Vinyl
Foundation	Concrete Perimeter

Additional Information

Date Listed	March 25th, 2025
Days on Market	24
Zoning	Zone 05

DATA IS DEEMED RELIABLE BUT IS NOT GUARANTEED ACCURATE BY THE REALTORS® ASSOCIATION OF EDMONTON. COPYRIGHT 2025 BY THE REALTORS® ASSOCIATION OF EDMONTON. ALL RIGHTS RESERVED. Trademarks are owned or controlled by the Canadian Real Estate Association (CREA) and identify real estate professionals who are members of CREA (REALTOR®, REALTORS®) and/or the quality of services they provide (MLS®, Multiple Listing Service®)

Listing information last updated on April 17th, 2025 at 10:32pm MDT