

# \$649,900 - 6411 27 Avenue, Edmonton

MLS® #E4427597

## \$649,900

3 Bedroom, 2.50 Bathroom, 2,140 sqft  
Single Family on 0.00 Acres

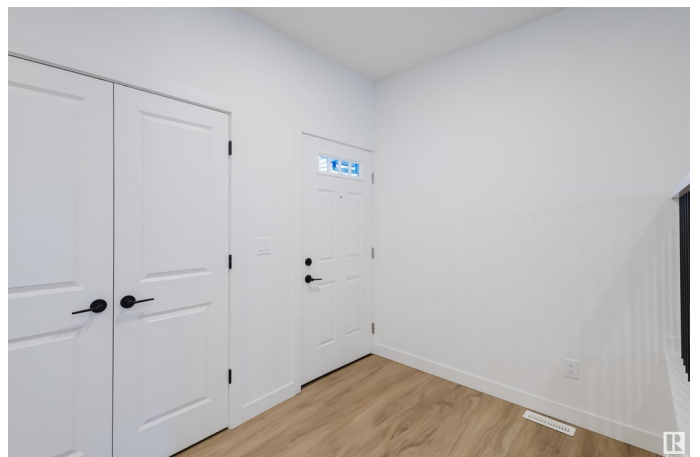
Mattson, Edmonton, AB

PREMIUM 2 STOREY! Featuring 3 bedrooms and 2.5 baths, the superior craftsmanship and attention to detail is evident as soon as you step inside. Beautifully upgraded with quartz counters, designer lighting, high end flooring and quality cabinetry throughout. The chef's kitchen is a dream with walk thru pantry, dining area and the bright living room has huge windows flooding the home with natural light and is anchored by a sleek linear fireplace. The upper level has a spacious bonus room, laundry room, 3 bedrooms, the primary with a 5 pc ensuite, drop in tub & glass shower. The basement has a SEPARATE ENTRANCE which opens up loads of future possibilities. Surrounded by natural beauty, scenic walking trails and park space "modern living at its finest!"

Built in 2024

### Essential Information

MLS® #	E4427597
Price	\$649,900
Bedrooms	3
Bathrooms	2.50
Full Baths	2
Half Baths	1
Square Footage	2,140
Acres	0.00



Year Built	2024
Type	Single Family
Sub-Type	Detached Single Family
Style	2 Storey
Status	Active

### **Community Information**

Address	6411 27 Avenue
Area	Edmonton
Subdivision	Mattson
City	Edmonton
County	ALBERTA
Province	AB
Postal Code	T6X 1A3

### **Amenities**

Amenities	Ceiling 9 ft., HRV System
Parking	Double Garage Attached

### **Interior**

Interior Features	ensuite bathroom
Appliances	Dishwasher-Built-In, Dryer, Garage Control, Garage Opener, Hood Fan, Refrigerator, Stove-Electric, Washer, Window Coverings
Heating	Forced Air-1, Natural Gas
Fireplace	Yes
Fireplaces	Insert
Stories	2
Has Basement	Yes
Basement	Full, Unfinished

### **Exterior**

Exterior	Wood, Stone, Vinyl
Exterior Features	Airport Nearby
Roof	Asphalt Shingles
Construction	Wood, Stone, Vinyl
Foundation	Concrete Perimeter

### **Additional Information**

Date Listed	March 24th, 2025
-------------	------------------

Days on Market 17

Zoning Zone 53

DATA IS DEEMED RELIABLE BUT IS NOT GUARANTEED ACCURATE BY THE REALTORS® ASSOCIATION OF EDMONTON. COPYRIGHT 2025 BY THE REALTORS® ASSOCIATION OF EDMONTON. ALL RIGHTS RESERVED. Trademarks are owned or controlled by the Canadian Real Estate Association (CREA) and identify real estate professionals who are members of CREA (REALTOR®, REALTORS®) and/or the quality of services they provide (MLS®, Multiple Listing Service®)

Listing information last updated on April 9th, 2025 at 10:17pm MDT