

Courtesy Of John Rota Of Sweetly

\$675,000 - 49 Gladstone Bend, Spruce Grove

MLS® #E4427696

\$675,000

3 Bedroom, 2.50 Bathroom, 2,241 sqft
Single Family on 0.00 Acres

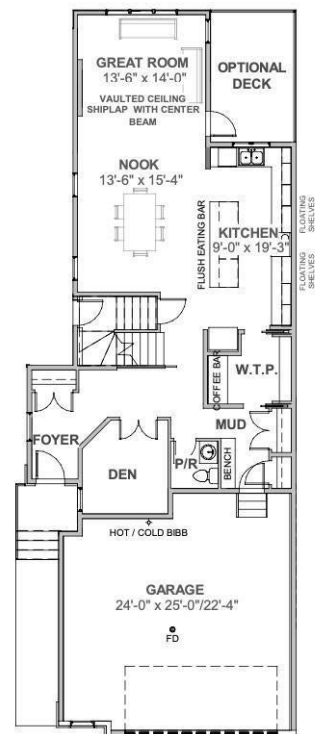
Greenbury, Spruce Grove, AB

Step into this stunning two-storey home in Greenbury, Spruce Grove. The main floor offers a welcoming living room, a dining room, a stylish kitchen, a mudroom, a den, a convenient 2-piece bathroom, and the option to add a deck for outdoor enjoyment. The upper floor boasts a spacious bonus room, a primary bedroom with a walk-in closet and a luxurious 5-piece ensuite, two additional bedrooms, a laundry room, and a 4-piece bathroom. This home also includes an attached double garage, offering ample parking and storage. This home combines style and practicality for your ideal lifestyle.

Built in 2025

Essential Information

MLS® #	E4427696
Price	\$675,000
Bedrooms	3
Bathrooms	2.50
Full Baths	2
Half Baths	1
Square Footage	2,241
Acres	0.00
Year Built	2025
Type	Single Family
Sub-Type	Detached Single Family



MAIN FLOOR PLAN
9'-1" CEILING HEIGHT

Style 2 Storey
Status Active

Community Information

Address 49 Gladstone Bend
Area Spruce Grove
Subdivision Greenbury
City Spruce Grove
County ALBERTA
Province AB
Postal Code T7X 0Z6

Amenities

Amenities Detectors Smoke, No Animal Home, No Smoking Home
Parking Double Garage Attached

Interior

Interior Features ensuite bathroom
Appliances See Remarks
Heating Forced Air-1, Natural Gas
Stories 2
Has Basement Yes
Basement Full, Unfinished

Exterior

Exterior Wood, Vinyl
Exterior Features Playground Nearby, Public Transportation, Schools, Shopping Nearby
Roof Asphalt Shingles
Construction Wood, Vinyl
Foundation Concrete Perimeter

Additional Information

Date Listed March 27th, 2025
Days on Market 9
Zoning Zone 91

DATA IS DEEMED RELIABLE BUT IS NOT GUARANTEED ACCURATE BY THE REALTORS® ASSOCIATION OF EDMONTON. COPYRIGHT 2025 BY THE REALTORS® ASSOCIATION OF EDMONTON. ALL RIGHTS RESERVED. Trademarks are owned or controlled by the Canadian Real Estate Association (CREA) and identify real estate professionals who are members of CREA (REALTOR®, REALTORS®) and/or the quality of services they provide (MLS®, Multiple Listing Service®)

Listing information last updated on April 4th, 2025 at 10:02pm MDT