

\$139,900 - 2307 320 Clareview Station Drive, Edmonton

MLS® #E4430015

\$139,900

1 Bedroom, 1.00 Bathroom, 626 sqft

Condo / Townhouse on 0.00 Acres

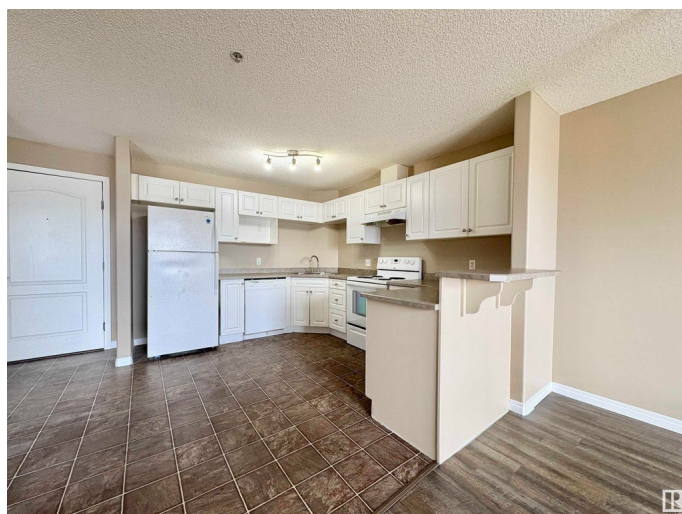
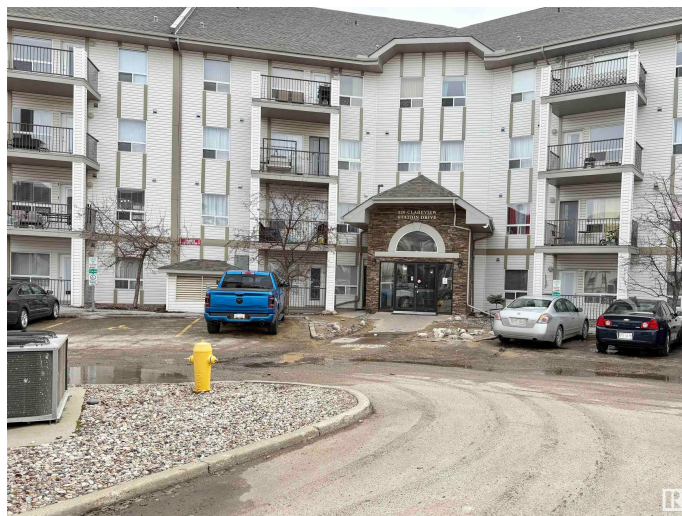
Clareview Town Centre, Edmonton, AB

Perfectly located just steps from the Clareview LRT Station and Transit Centre, this freshly painted 1-bedroom, 1-bathroom apartment offers unbeatable convenience and comfort. With over 600 sq ft of well-designed living space, this bright and functional unit features in-suite laundry, an open-concept layout, and a modern feel throughout. Enjoy the perks of titled parking and access to the building's recreation room, perfect for entertaining guests or unwinding after a long day. Whether you're a first-time buyer, student, or savvy investor, this location is ideal – close to shopping, dining, fitness centers, and major commuter routes. Don't miss this opportunity to own in one of Northeast Edmonton's most accessible and growing communities. Quick possession available.

Built in 2007

Essential Information

MLS® #	E4430015
Price	\$139,900
Bedrooms	1
Bathrooms	1.00
Full Baths	1
Square Footage	626
Acres	0.00
Year Built	2007



Type	Condo / Townhouse
Sub-Type	Lowrise Apartment
Style	Single Level Apartment
Status	Active

Community Information

Address	2307 320 Clareview Station Drive
Area	Edmonton
Subdivision	Clareview Town Centre
City	Edmonton
County	ALBERTA
Province	AB
Postal Code	T5Y 0E5

Amenities

Amenities	Parking-Visitor, Recreation Room/Centre, Storage-In-Suite
Parking	Stall, See Remarks

Interior

Appliances	Hood Fan, Refrigerator, Stacked Washer/Dryer, Stove-Electric
Heating	Baseboard, Water
# of Stories	4
Stories	1
Has Basement	Yes
Basement	None, No Basement

Exterior

Exterior	Wood, Vinyl
Exterior Features	Playground Nearby, Public Swimming Pool, Public Transportation, Shopping Nearby, See Remarks
Roof	Asphalt Shingles
Construction	Wood, Vinyl
Foundation	Concrete Perimeter

Additional Information

Date Listed	April 10th, 2025
Days on Market	10
Zoning	Zone 35
Condo Fee	\$324

DATA IS DEEMED RELIABLE BUT IS NOT GUARANTEED ACCURATE BY THE REALTORS® ASSOCIATION OF EDMONTON. COPYRIGHT 2025 BY THE REALTORS® ASSOCIATION OF EDMONTON. ALL RIGHTS RESERVED.Trademarks are owned or controlled by the Canadian Real Estate Association (CREA) and identify real estate professionals who are members of CREA (REALTOR®, REALTORS®) and/or the quality of services they provide (MLS®, Multiple Listing Service®)

Listing information last updated on April 20th, 2025 at 10:02am MDT