

\$724,900 - 337 Still Creek Crescent, Sherwood Park

MLS® #E4431689

\$724,900

4 Bedroom, 3.50 Bathroom, 2,441 sqft

Single Family on 0.00 Acres

Summerwood, Sherwood Park, AB

Hello GORGEOUS! This fully finished family home is the ONE you've been waiting for, featuring AC, 4 bedrooms & 3.5 baths tucked onto a quiet street in the family friendly community of Summerwood. A bright & spacious entry invites you in to find 9' ceilings & hardwood flooring throughout the main level. The chef's kitchen offers plenty of modern 2 toned cabinets, S/S appliances, including gas stove, walk through pantry & quartz island that over looks the dining & living room with cozy fireplace. Complementing the functional layout is a 1/2 bath & mud room. Moving upstairs you will LOVE the king sized primary suite with 2 WI closets & luxurious ensuite. 2 more bdrms are both generous in size, 4pc bath, media room & bonus room - tons of room for the whole family! The basement is fully finished with vinyl plank flooring through the family sized rec room, 4th bdrm, flex space & 4pc bath, plus room for storage. ENJOY the fenced & landscaped SOUTH yard with tiered deck. Steps away from parks, trails & schools!

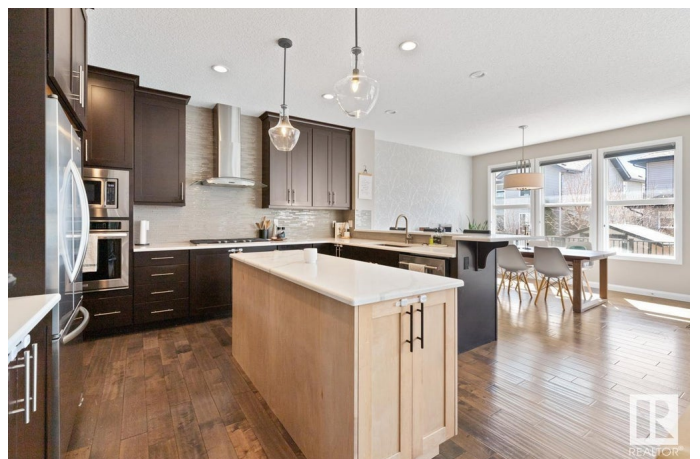
Built in 2013

Essential Information

MLS® # E4431689

Price \$724,900

Bedrooms 4



Bathrooms	3.50
Full Baths	3
Half Baths	1
Square Footage	2,441
Acres	0.00
Year Built	2013
Type	Single Family
Sub-Type	Detached Single Family
Style	2 Storey
Status	Active

Community Information

Address	337 Still Creek Crescent
Area	Sherwood Park
Subdivision	Summerwood
City	Sherwood Park
County	ALBERTA
Province	AB
Postal Code	T8H 0S7

Amenities

Amenities	Air Conditioner, Ceiling 9 ft., Deck, Vinyl Windows, See Remarks
Parking	Double Garage Attached, Insulated

Interior

Interior Features	ensuite bathroom
Appliances	Air Conditioning-Central, Dishwasher-Built-In, Dryer, Freezer, Hood Fan, Oven-Microwave, Refrigerator, Stove-Gas, Washer, Window Coverings, Wine/Beverage Cooler, TV Wall Mount
Heating	Forced Air-1, Natural Gas
Fireplace	Yes
Fireplaces	Tile Surround
Stories	3
Has Basement	Yes
Basement	Full, Finished

Exterior

Exterior	Wood, Stone, Vinyl
Exterior Features	Fenced, Landscaped, Playground Nearby, Public Transportation,

Schools, Shopping Nearby, See Remarks

Roof	Asphalt Shingles
Construction	Wood, Stone, Vinyl
Foundation	Concrete Perimeter

School Information

Elementary	DAVIDSON CREEK
Middle	SHERWOOD HEIGHTS
High	SALISBURY COMP

Additional Information

Date Listed	April 18th, 2025
Days on Market	2
Zoning	Zone 25

DATA IS DEEMED RELIABLE BUT IS NOT GUARANTEED ACCURATE BY THE REALTORS® ASSOCIATION OF EDMONTON. COPYRIGHT 2025 BY THE REALTORS® ASSOCIATION OF EDMONTON. ALL RIGHTS RESERVED.Trademarks are owned or controlled by the Canadian Real Estate Association (CREA) and identify real estate professionals who are members of CREA (REALTOR®, REALTORS®) and/or the quality of services they provide (MLS®, Multiple Listing Service®)

Listing information last updated on April 20th, 2025 at 10:02am MDT